



ProProctor™ User Guide

Version 6.4

REVISED: September 2024



User Guide

Available in the following languages

Français

[Le guide utilisateur est disponible en française en cliquant sur ce lien.](#)

Español

[La Guía del Usuario de ProProctor está disponible en Español haciendo clic en este enlace.](#)

简体中文

[点击此处获取《ProProctor用户手册》简体中文版](#)

繁體中文

[點擊此處獲取《ProProctor用戶手冊》繁體中文版](#)

Table of Contents

Welcome to ProProctor™	5
The Essentials	6
Environmental Requirements	7
Testing Procedures	8
Prohibited Items and Examinee Conduct	9
System Requirements	10
Device	10
Hardware	11
Operating System	12
Before You Schedule Your Exam	13
Before Test Day	14
On Test Day	15
Check-in Process	16
Readiness	18
Environment and Candidate/Security Scans	19
During Your Test	20
Do's	20
Dont's	21
Getting Help During Your Exam	22
Keep In Mind	23
Confidentiality of Exam Content and Systems	24
Help and Support	25

Proprietary Information Notice

The information and data contained herein are proprietary and shall not be duplicated, used, or disclosed.

Welcome to ProProctor™



Prometric's ProProctor online proctoring platform has two goals: one is to bring you a reliable, and valid way to test that is also convenient, the other is to make your testing experience as stress free as possible.



ProProctor gives you greater flexibility to choose where to test, when to test, and how to test. It is a reliable, convenient – yet secure – testing experience.



ProProctor support tools, such as this User Guide, show you how to prepare for your test day so that you'll be less nervous when the time comes. We believe that the more you know about what to expect in advance, the more comfortable you will feel testing remotely.

The Essentials

Taking a remote exam can feel like a daunting task. This user guide will help you alleviate stress by outlining what to expect and prepare you for specific procedures and requirements on exam day. Please read all the information carefully and ensure your device meets the technical specifications before you proceed to test.

Types of Remote Testing

There are two types of exams delivered through ProProctor

ProProctor AI

ProProctor AI is a fully automated remote testing solution without live agents. Your test sponsor may refer to ProProctor AI as “Auto-proctoring” or “Record and Review.” You will follow a series of screens and instructions to guide you through the auto check-in process. During your exam, you will be monitored by AI only.

AI ONLY

Where you see this symbol in the User Guide, it denotes a procedure or requirement only found in a ProProctor AI exam.

ProProctor Live

On exam day, you will interact with live agents, who will guide you through the check-in process and monitor you during the exam.

LIVE ONLY

Where you see this symbol it denotes a procedure or requirement only found in a ProProctor Live exam.

Environmental Requirements

Regardless of the ProProctor version you will be using, your testing space must meet the following requirements:

- ✓ Your testing space must be indoors (walled), well lit, free from background noise and disruptions.
- ✓ No third party may be present in the room or enter the room for the duration of the exam.
- ✓ Your testing space and surrounding area must be free of pens, paper, electronic devices, etc. No content that could potentially provide an unfair advantage during your exam, including that posted on walls or within your immediate area, should be present during your exam.
- ✓ Two tissues are permitted in your testing space
 - LIVE ONLY** If testing with ProProctor Live, you must allow the Proctor to inspect your tissues prior to the start of the exam.
- ✓ Your test sponsor may also require additional items to be removed.
- ✓ Your testing space must be set up to eliminate distractions and prevent outside viewing. This may mean covering windows and non-frosted glass doors.

Testing Procedures



While specific testing procedures may vary based on your exam, here's what to expect on exam day.

- ✓ An original, valid (unexpired), government-issued photo identification is required to take an exam. Validity and the number of acceptable IDs is predetermined by your test sponsor. Check your exam confirmation email for specific requirements.
- ✓ Be prepared to show your workstation and surrounding area.
- ✓ As part of the check-in process, you may be required to empty and turn all pockets inside-out and raise shirt sleeves above your wrists prior to every entry into the online test. If you are wearing eyeglasses, you may be required to remove them for visual inspection to ensure they don't contain a recording device. In addition, large jewellery items must be removed.
- ✓ If you have long hair that covers your ears, you may be asked to pull your hair back to ensure nothing is attached to your ear that could provide an unfair advantage (such as a Bluetooth earpiece).
- ✓ Leaving the camera view while the exam is in progress is strictly prohibited unless otherwise specified by the test sponsor.

Prohibited Items and Examinee Conduct

The following items are prohibited while taking your remote exam:

- ⊘ Unauthorized personal items may not be accessible while testing. Such items include, but are not limited to outerwear, hats, food, drinks, purses, bags or briefcases, notebooks, watches, cell phones, electronic devices, or wearable technology.
- ⊘ Eating, drinking, smoking, and chewing gum are prohibited during the exam.
- ⊘ Written notes, published materials, and other testing aids are strictly prohibited.
- ⊘ Light clothing items removed for comfort such as sweaters, suit jackets, scarves, etc., must be hung your chair, not placed in laps or on the workstation desktop. Outerwear such as heavy coats, parkas, raincoats, etc., is not permitted in the immediate testing area.

System Requirements

Device

Check your device and hardware to ensure they meet the following system requirements. Where appropriate, we will direct you to further information which can be [found on our Knowledge Base](#).

Device Type



You must only use a laptop or desktop computer for your exam. Taking your exam on a mobile phone or iPad/Android tablets is not possible. Microsoft Surface or similar devices can be used only when configured in laptop mode.

Organization-owned device



If you are using a device owned by an organization, you must have administrator rights/privileges to be able to install and configure ProProctor correctly.

Firewalls and/or other security settings on organization-owned devices may restrict your ability to launch the ProProctor App. [Get help preparing your device on our Knowledge Base](#).

Power Source



Please plug your device directly into a power source, unattached from a docking station.

Internet Connection



5.0 Mbps or greater download speed

0.5 Mbps or greater upload speed

Please position your device where you can receive the strongest signal, a weak Wi-Fi connection may cause ProProctor to lose connection. For the best experience, please use an Ethernet cable to connect directly to the router. If you are sharing your internet connection with other people, please ensure they are not streaming videos, music, or games, as this can have an adverse effect on your experience.

System Requirements

Hardware

Monitor



You can only use a single monitor for your exam, please ensure you unplug any additional monitors you have connected to your device.

If you are using a laptop, you are permitted to connect a single external monitor, however you must close the laptop. In this case you will NOT be able to use the laptop's integrated camera, keyboard or trackpad.

Microphone



You must have a working microphone connected to your device.

Camera



You must have a working camera connected to your device, external camera required if using a desktop. The camera is used as part of the check-in process and during the exam.



Pro Tip

Close all applications on your device that may be using your camera and/or microphone. This will help you avoid camera connection errors in the ProProctor application.

If you are using a desktop computer or a laptop with the screen closed, the camera must be connected via USB.

Speakers



You must have working speakers connected to your device. Please ensure that the volume is loud enough prior to your exam, as you will be unable to adjust the volume once you launch the ProProctor App.

Wired headphones and microphones may be permitted to be used – verify first with your test sponsor before test day. In-ear/earbuds and wireless headsets/headphones are not permitted.

System Requirements

Operating System

Supported



- ✓ Windows 8.1 or higher.
- ✓ Mac OS High Sierra (10.13) or higher.

Not Supported

- ⚠ Mac OS Ventura 13.0 to 13.21
- ⚠ Mac OS Sequoia 15.0
- ⚠ Chrome OS
- ⚠ Linux based distributions
- ⚠ Virtual machines

Screen Resolution



The recommended screen resolution is

1920 x 1080

Minimum resolution is

1024 x 768

Screen Scaling



Operating systems do allow you to scale items displayed on screen. Ensure that you have your system scaling set to 100%. More information on scaling can be found on the Knowledge Base.

Before You Schedule Your Exam



Check your System

It is important to know whether your device and network connection are suitable for a remote exam.

Run a system check on the Candidate Portal to validate your device meets ProProctor's basic system requirements. If it doesn't pass, you may need to contact your test sponsor to make other arrangements.

Please note

VPNs, firewalls, and anti-virus software can prevent you from launching a ProProctor exam. Please ensure these are all de-activated [this Knowledge Base article on VPNs](#) provides further guidance on how to do this.

Before Test Day

After scheduling your test, you will receive a confirmation email outlining the details of your exam. Your test sponsor may send you a separate communication to confirm if you're testing with ProProctor AI or ProProctor Live. Set aside time before test day to get your device ready for the day of your exam. This is the best way you can prepare and avoid unnecessary stress on test day.

1

Download ProProctor

Download and install the latest version of the ProProctor application from the Candidate Portal.

Important Information

If the download is blocked by your computer's firewall, the [Knowledge Base article on installation](#) provides further information ([Mac instructions are found here](#)). This also includes adding the software to your computer's whitelisted application list, on either Mac or Windows computer.

If you are taking the exam on an organization-owned/managed device, ensure you have admin rights/privileges, as otherwise you might not be able to install the application.

If you are using a Mac computer, and the app is blocked from installing by the operating system, you may need configure your system to allow it.

2

Conduct a System Check

ProProctor Live

Open the ProProctor app, enter your confirmation number and your last name/surname.

Then select the "Check my System" button to perform a system check. This system check will make you familiar with what to expect during the check-in process on exam day.

ProProctor AI

For this type of remote exam, select the link for the Candidate Portal that can be found in your confirmation email and run the system check found on that site

On Test Day

It's the day of your test. Please read below for some last-minute tips to prepare before you log in to your test.

When you are ready to test, you will go through the check-in process, below details what to expect depending on the type of test you are taking.

1

Prepare Your Device

- ✓ Don't forget to disable any VPNs, add exception to firewalls and add exclusions to anti-virus software. [Please visit the VPN article found on the Knowledge Base](#) for guidance.
- ✓ Ensure you have closed all open applications and web browsers before launching ProProctor.

3

Prepare Your Documentation

- ✓ Have your valid government-issued photo ID ready.
- ✓ Have your registration confirmation code ready.
- ✓ Consult with your test sponsor for any additional information required on test day.

2

Prepare Your Testing Space

Make sure you allow 15 minutes to prepare your testing space. Please review again the environmental requirements earlier in this document just to make sure you are properly prepared.

4

When You Are Ready to Test

When you are comfortably sitting at your workstation launch ProProctor. Enter your confirmation number and your last name/surname. to launch your exam. You will then begin the check-in process.

On Test Day

Check-in Process

Our easy-to-follow, self-serve check-in process will guide you through the final preparations before you complete the Readiness process. Close the doors of the room you are working in, including doors to closets and visible bathrooms.

1

System Check

Before launching, ProProctor will require one last system check to ensure that nothing has changed with your system that could affect your exam experience

2

Image Capture

You will be asked to take a photo of yourself. There will be guides on-screen to ensure you position your face correctly. You will need to select the option to take the photo.



Pro Tip

Make sure you check that the image clearly shows your face, is well lit and is not blurry, otherwise you will be prompted to retake the photo.

On Test Day

Check-in Process *continued*

3

ID Capture

Next, you will be asked to take a photo of your government-issued photo ID. Again, ensure you position your ID using the guides on the screen then select the option to take the photo.



Pro Tip

Make sure you check that all text is readable. For specific identification requirements, check your exam confirmation email.

4

ID Authentication

LIVE ONLY

If there are any concerns around the images not matching, a readiness agent will conduct a manual check.

AI ONLY

The system will ask you to authenticate your ID image and your image. If there is a mismatch you maybe asked to retake both images. The number of retakes is determined by your test sponsor.

Important Information

You will still be able to proceed to your exam if you are unable to get a match.

On Test Day Readiness

Next, you will complete the Readiness process.

Your test sponsor may require you to perform a scan of your testing space and a security scan.

LIVE ONLY At this point, for a ProProctor Live exam, you will be connected to a live agent via video chat. The agent will confirm your email, address, and exam details. The agent will also take you through the testing space and security scans.

AI ONLY For a ProProctor AI exam you will be guided by on-screen instructions to assist you in completing the testing space and security scans. AI will be monitoring at this time. Please ensure that you have followed the environmental requirements as you may be asked to complete a rescan.

On Test Day

Environment and Candidate/Security Scans

Environment Scan

This will involve providing a 360° view of your testing space. You will have to lift your webcam or laptop and move it around, so ensure you can do this easily.

During the scan you will be required to show the room where you are taking the test, your testing space, your desk and your chair, as well as things like bookshelves, wall hangings and electronic devices.

This will be your last opportunity to put away all your personal items. We recommended to have a large bedsheet or linen available if asked to cover any area of clutter.

Important Information

Do not have your laptop connected to a docking station anytime during the setup of your exam. This can cause connectivity issues.

Candidate/Security Scan

Lastly, you will be required to do a scan of yourself. This scan will include – but is not limited to – conducting sleeve, pocket, glasses, and behind ear checks. Additionally, you will be asked to turn all pockets inside out.

Important Information

To expedite the check-in process, please remember to empty your pockets prior to the visual check.

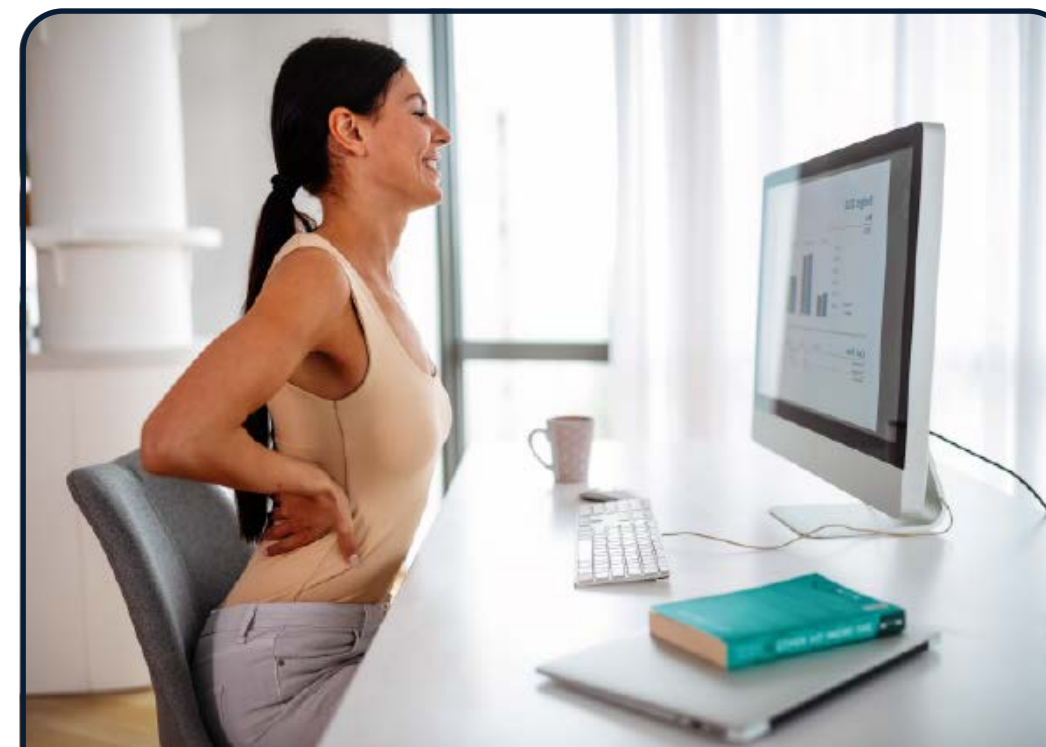
During Your Test

Do's

When making final preparations for your remote exam, make sure you pay careful attention to the Do's listed below.



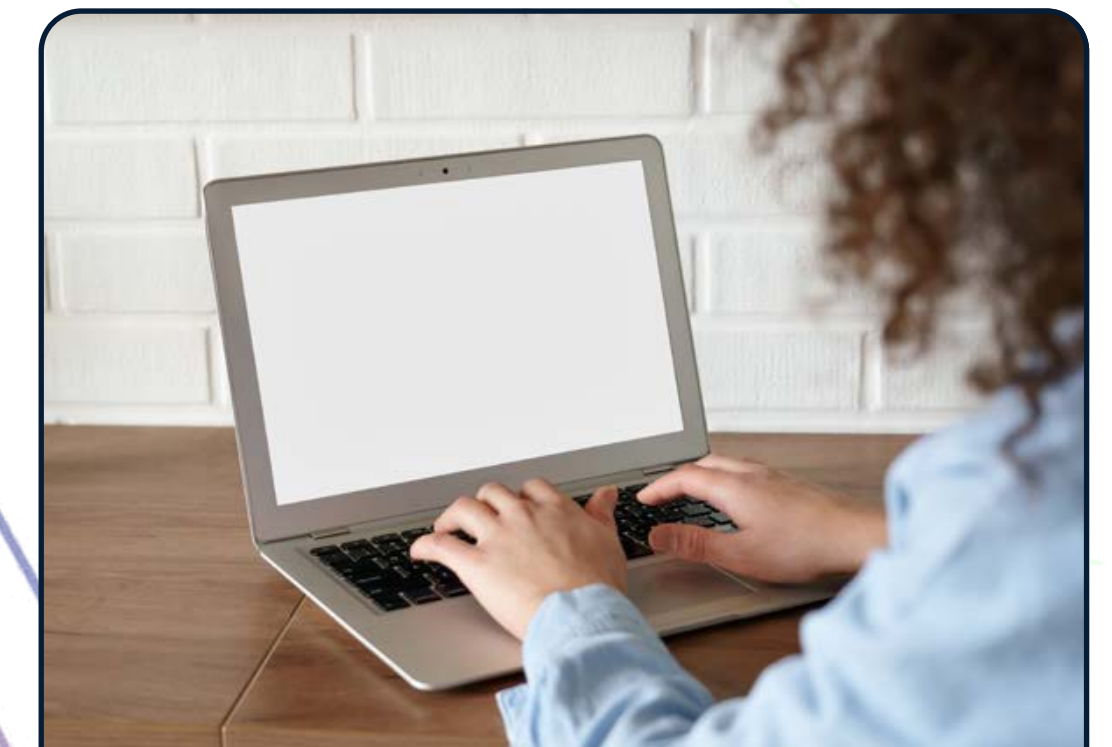
- ✓ Have a clear, orderly, and well-lit room or workspace.



- ✓ Sit in an upright position.



- ✓ Test alone for the entire exam.




- ✓ Place your desktop / laptop on table or desk.

During Your Test


Don't's

When making final preparations for your remote exam, make sure you pay careful attention to the Don'ts listed below.




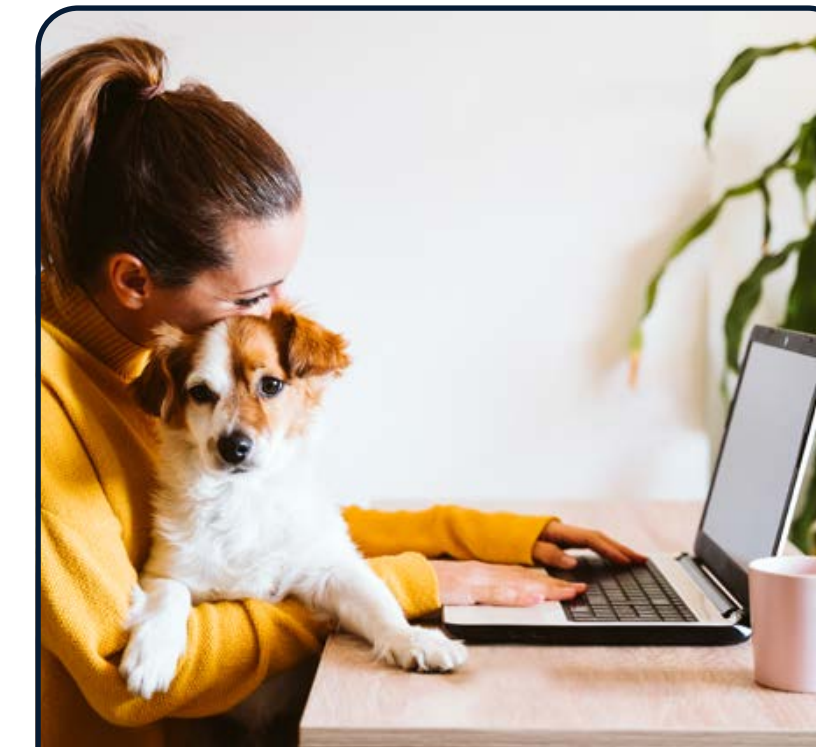
 Don't sit or recline in a bed or couch with computer on your lap.




 Don't have a poorly lit room or workspace.




 Don't have a cluttered or crowded room or workspace.



 Don't have a person(s) or pet(s) present at any time in your testing space



 Don't use a dual-monitor configuration to take exam.

Getting Help During Your Exam

LIVE ONLY

A Proctor will be monitoring you throughout the exam. You will be able to communicate with them using the chat functionality found at the top of your screen. If you experience technical issues, you may be directed to go.prometric.com/chat for support.

AI ONLY

There are no Proctors monitoring you and no chat support during your exam. If you experience technical issues during a ProProctor AI exam, you will need to exit the ProProctor application and visit go.prometric.com/chat for support.

Keep In Mind

- ⊘ Changing location while testing, turning off lighting or audio, speaking to or receiving aid from other individuals is strictly prohibited.
- ✓ Candidates are required to be professional, civil, and respectful at all times while testing.
- ✓ All exams are continuously monitored by video and audio recording.

LIVE ONLY

The Agent is authorized to dismiss you from the test session for a violation of any of the Testing Regulations, including exhibiting abusive behavior towards the Remote Proctor. If you are found to have violated any of the regulations during your exam, the Remote Proctor is required to notify Prometric and your test sponsor.

AI ONLY

Any anomalies are tracked by the system during your exam, and a count is displayed near your webcam video. Your exam session may be reviewed to ensure that no testing regulations have been broken.

Please Note

Prometric, alone or in conjunction with your test sponsor, shall then take any further action necessary to sanction your conduct, up to and including invalidation of your test score and/or pursuit of civil or criminal charges. You acknowledge that you have no right to privacy at your current location during exam delivery and that you waive any and all claims asserting a right to privacy.

If you do not wish to be recorded (either by video or audio), please notify the proctor immediately of your intent not to proceed with the exam.

Client/test sponsor practice policies shall supersede these regulations if a conflict exists.

Confidentiality of Exam Content and Systems

The remote proctoring application, computer-based test delivery system, tutorial, exam content, and survey are the published, confidential, and proprietary materials or intellectual property of Prometric and/or your test sponsor.

Communicating, publishing, reproducing, or transmitting any part of an exam, in any form or by any means (e.g., verbal, electronic, written, etc.) for any purpose is strictly prohibited. Any reproduction or disclosure will result in immediate notification to your test sponsor and potential filing of administrative, civil and/or criminal charges against you and anyone directing or conspiring with you.

Help and Support

Testing Accommodations

If you require accommodations for any illness, learning or physical challenge, please contact Prometric Testing Accommodations at +1-800-789-9947, Option 3.

Technical Support

PLEASE NOTE: If you require technical support before or during your exam, please click on the link: go.prometric.com/chat