

Welcome to the 7th Early Childhood Summit

Fostering Dignity and Equality for Every Child: Strategies for Inclusive Placements, Curricula, and Instruction in Early Childhood Programs

Beaver Run Resort and Conference Center, Colorado

June 5-7, 2024



7th Annual Early Childhood Summit



Sponsored by Bresnahan-Halstead Center at the University of Northern Colorado, the Colorado Department of Early Childhood and **organized** in partnership with Early Intervention Colorado and the Head Start Collaboration Office at CDEC and the Early Childhood Special Education Team in the Exceptional Student Services Unit at the Colorado Department of Education.



COLORADO
Department of Early Childhood



Early Intervention
COLORADO



UNIVERSITY OF
**NORTHERN
COLORADO**



COLORADO
Department of Education

Bresnahan Halstead Center

Silvia M. Correa-Torres,
Ed.D., COMS
Professor of Special Education
Executive Director



Planning Committee



Lorae Blum, Business Manager, Bresnahan-Halstead Center

Rebecca Browning-Floyd, M.A. Results Matter and Early Childhood Specialist,
Colorado Department of Education

Heather Craiglow, M.S. National Partnerships Lead, Head Start Collaboration
Office Director, Colorado Department of Early Childhood

Rachel Karas, M.A. CCC-SLP Provider Training Coordinator, Early Intervention
Colorado Department of Early Childhood

Nancy M. Sileo, Ed.D. Professor, University of Northern Colorado

Hasan Zaghlawan, Ph.D. Associate Professor, University of Northern Colorado

Housekeeping

- Enjoy and Learn ~ Make the most of this summit!!
- For you:
 - Agenda for Day 2 & 3
 - Evaluations for Day 2 & 3
 - Handouts for Days 2 & 3
- Certificate of Attendance/UNC credit options
- Beaver Run meeting 1 - password (conferencewifi)
- Charging station
- Restrooms
- Enjoying Breckenridge



EC Summit: Looking Back

2014: Language, Early Literacy and Family Engagement

2015: Social and Emotional Development of Young Children: Promotion, Prevention, and Intervention

2016: A {R}evolutionary Approach to Inclusion in an Age of Accountability

2017: Effective Teaming and Collaboration

2018: Leading from the Middle: Influencing Up, Down, and Sideways

2019: On the Move: Supporting the Transition Process for Children and Families

2020-2023: Pause due to Pandemic

Community Building





Colorado Department of Education



Theory of Change

Our Vision

To create an equitable educational environment where *all* students and staff in Colorado thrive

Our Role

To improve student outcomes and ensure students and families across Colorado have access to high-quality schools, we will:

> SERVE

Provide actionable support to local educational agencies

> GUIDE

Implement policy and enact legislation in an effective way

> ELEVATE

Share the experiences of local educational agencies and students

Our Core Values: INTEGRITY | EQUITY | ACCOUNTABILITY | TRUST | SERVICE

Our Priorities:

Increase Student Engagement

Accelerate Student Outcomes

Strengthen the Educator Workforce

Provide Operational Excellence

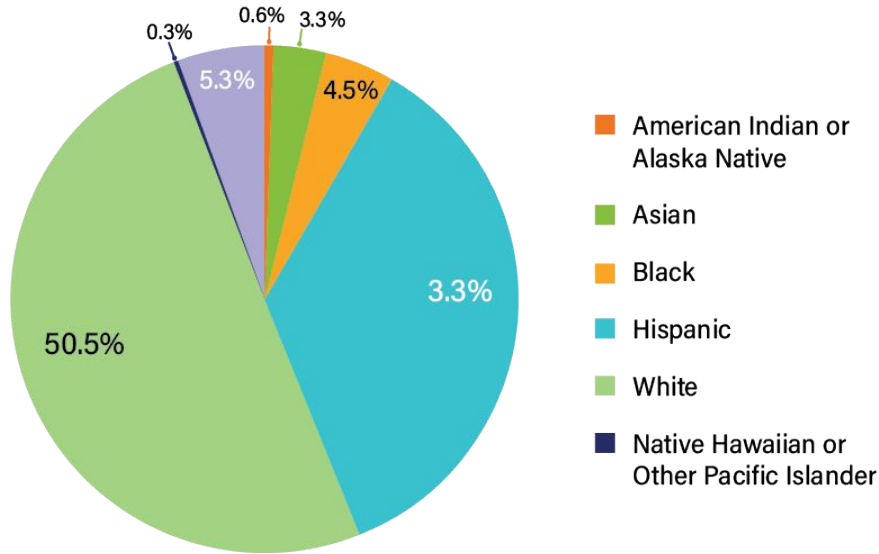
Our schools, students, and educators

178
SCHOOL
DISTRICTS

1,927
SCHOOL

881,464
PUBLIC
SCHOOL
STUDENTS

Student Demographics*



*October 2023 Data

Eligible for Free/Reduced Lunch:

403,231 (~46%)

Students with Individualized Education Programs:

113,992 (~13%)

Multilingual Learners*:

95,734 (~11%)

McKinney Vento:

16,540 (~2%)

**Includes both Non-English Proficient and Limited English Proficient students*



Early Childhood Special Education



Team Vision

Every child deserves inclusive high quality early learning experiences, setting a foundation for belonging and contributing to their classrooms, schools, and communities.

We build the capacity of leaders, educators, and families through mutual partnerships within systems to improve the identification of, and outcomes for, children ages 3 through 5 years old with disabilities as outlined in the Exceptional Children's Educational Act (ECEA) and the federal Individuals with Disabilities Education Act (IDEA).

We assist and support partners to:

- **Locate and identify** children with disabilities to access and participate in preschool services.
- Use **authentic assessments** to inform eligibility, programming, and classroom instruction to improve outcomes for children.
- Develop and implement **early childhood policies** that promote high quality inclusive practices for children with disabilities.
- Improve **preschool outcomes** through the use of Results Matter to inform program and policy decision-making.
- Co-construct shared knowledge to advocate for and implement **evidence-based practices** in early childhood special education.

Partnerships

- Early Intervention- CDEC
- Head Start Collaboration Office- CDEC
- Universal Preschool- CDEC
- School Districts/Administrative Units (AUs)
- Community Programs/Head Start Programs
- Higher Education
- Early Childhood Mental Health
- Healthy Child Care Colorado/Pyramid Model



Resources

- [Early Childhood Special Education Landing page](#)
- [Guidelines for Identifying Preschool Children for Special Education](#)
- [Policy Statement on Inclusion of Children with Disabilities in Early Childhood Programs](#)
- [Suspensions and Expulsions in Preschool](#)

Heidi White

Preschool Director

303-501-0837

white_h@cde.state.co.us

Mary Morin

Preschool Child Find Specialist

720-766-6507

morin_m@cde.state.co.us

Marcia Blum

Early Childhood Special
Education Specialist

720-799-4015

blum_m@cde.state.co.us

Melissa Taucher

Early Childhood Special Education Specialist

720-822-6239

taucher_m@cde.state.co.us

Michele Pugsley

Early Childhood Special Education Specialist

720-660-0255

pugsley_m@cde.state.co.us

Rebecca Browning-Floyd

Results Matter and Early Childhood
Specialist

303-880-3697

browning-floyd_r@cde.state.co.us



Thank you!

Introduction to the Colorado Department of Early Childhood



COLORADO
Department of Early Childhood

CDEC Overview



Our Vision

All Colorado children, families, and early childhood professionals are valued, healthy and thriving.

Our Mission

The Colorado Department of Early Childhood ensures the delivery of a comprehensive, community-informed, data-driven, high quality and equitable early childhood system that supports the care, education and well-being of all Colorado's young children, their families and early childhood professionals in all settings.

Core Values

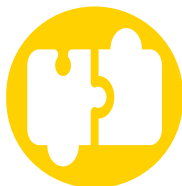
Equity—Family and Community Focused—
Excellence— Innovation— Asset-Based



CDEC's Strategic Goals



COLORADO
Department of Early Childhood



Goal 1

Expand Access to
Early Childhood
Services

Goal 2

Invest in Colorado's
Early Childhood
Workforce

Goal 3

Strengthen
Families

Goal 4

Build a Sustainable
Early Childhood
System

Goal 5

Use Resources in
Ways that
Maximize Impact

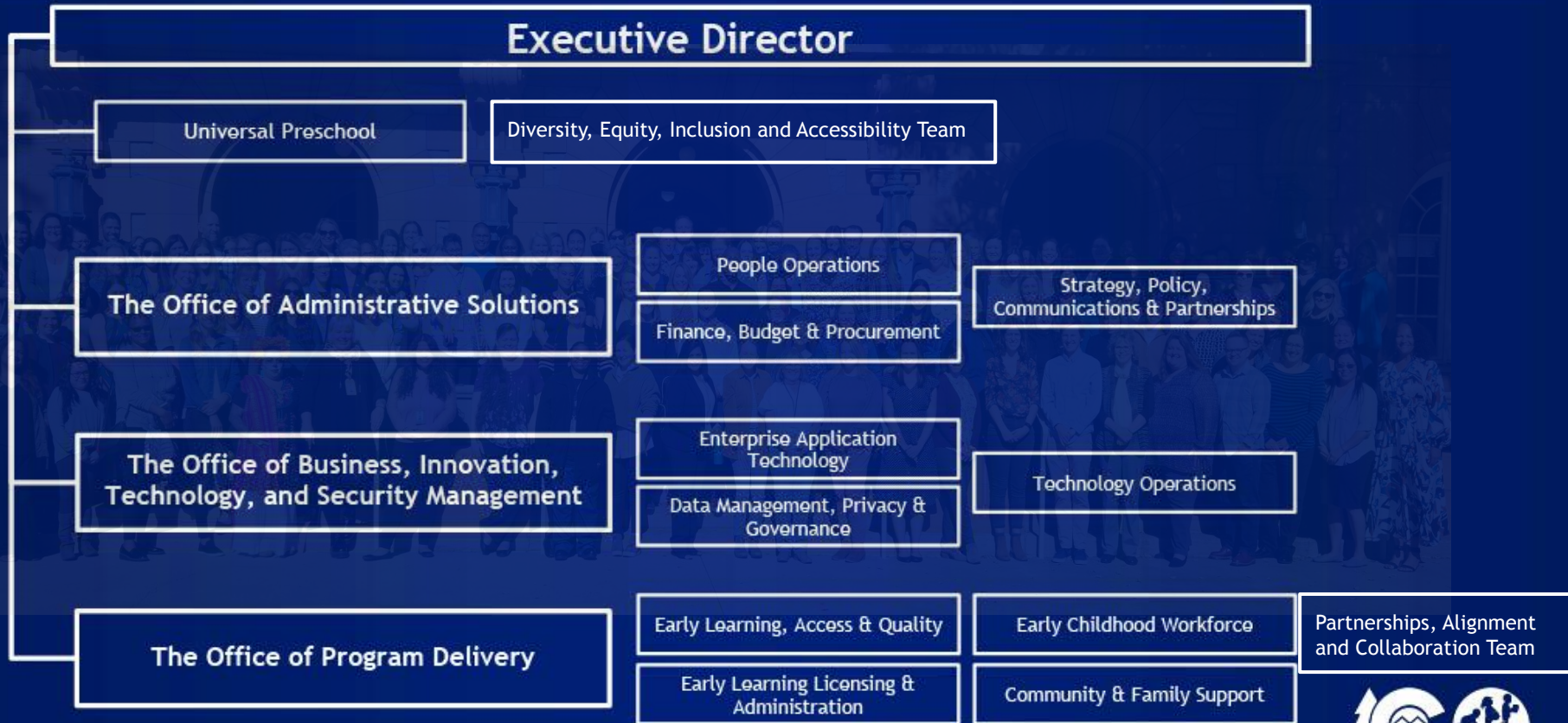
Goal 6

Use Data to Inform
Decisions and Drive
Action

Goal 7

Build and Nurture a
Workplace Culture
of Excellence

CDEC Organizational Structure



Office of Program Delivery

Division of Early Learning, Access and Quality (DELAQ)

DELAQ supports Colorado children with new and innovative approaches to achieving school readiness, safe, stable and nurturing environments, and resilience in early childhood.

The Division's strategic focus consists of increasing access to affordable, high-quality early learning environments.

Division of Early Learning, Licensing and Administration (DELLA)

DELLA is the State's lead in planning and implementing public child care policy in compliance with federal and state regulations.

The Division is responsible for the licensing and monitoring of approximately 5,000 child care facilities in Colorado, including child care centers, preschools, family child care homes, neighborhood youth organizations, and children's resident camps.

Division of Early Childhood Workforce (DECW)

DECW takes the lead for the State in honoring, professionalizing, and growing early care and education professionals to ensure that we recruit and retain a diverse, well-compensated, highly competent and thriving Early Childhood Educator (ECE) workforce across all Colorado communities.

Division of Community and Family Support (DCFS)

DCFS helps to provide families and communities across Colorado with the resources needed to support young children to thrive.

DCFS is organized into four units: Early Childhood Mental Health, Early Intervention Colorado, Family Strengthening, and State Systems Building Initiatives.



Division of Community and Family Support (DCFS)

Early Intervention Colorado (EI)

Provides developmental support and services for children from birth through two years of age who are referred due to a suspected developmental delay or disability.

- EI Referral Line
- Eligibility Evaluations
- Service Coordination
- Direct Services for infants and toddlers
- Workforce retention and expansion

The Early Intervention unit serves approximately 12,000 infants and toddlers annually and is the largest DCFS unit.

Family Strengthening Unit

Provides services focused on building protective factors among children, families and communities, including home visiting programs.

- Home Visiting Unit includes seven evidence-based home visiting programs.
- Family Support Unit includes eight programs that are designed to prevent child abuse and neglect through parenting and economic security supports and the network of family resource centers.

Early Childhood Mental Health Unit

The Early Childhood Mental Health (ECMH) Unit strengthens adult-child relationships and engages families in children's social emotional learning and development.

- Child First
- Consultation
- Incredible Years
- ECMH Support Line
- Training on Trauma Informed Approaches

These services encompass promotion of healthy foundations for mental well-being, prevention of problematic behaviors, and intervention for mental health issues in young children.

State Systems Building Initiatives Unit

Maximizes program impact, access, and delivery across the state early childhood system by coordinating operations, funding streams, and resources to promote strategic alignment and meaningful implementation.

- Preschool Development Grant Birth thru Five (PDG B - 5)
- EC Comprehensive Systems Grant: Health Integration Prenatal-to-3



Greetings- Rachel Karas!



Rachel Karas - CDEC

ECMH Consultation Resources

Learn More:

- [ECMH Consultation Flyer](#)
- [Frequently Asked Questions \(FAQ\)](#)

Watch the [CO Shines Video](#)
[MentalHealthStartsEarly.com](#)

Request Services:

Submit an [ECMH Online Referral](#)

Call the ECMH Support Line
(833)-ECMH411

Reach out to your [local consultant](#)



Colorado Universal Preschool

HB22-1295 established the Colorado Universal Preschool Program

Colorado Universal Preschool allows families to choose the right setting for their child, whether it is in a licensed community-based, school-based or home-based preschool setting.



[Learn More -Universal Preschool Family Information](#)





WHO IS ELIGIBLE

Any child in the year before they are eligible for kindergarten are eligible for 15 hours of Universal Preschool.

Families who are low income **AND** have one other qualifying factor are eligible for additional hours stacked on top of the up to 15 hours available to every child in the year before they are eligible for kindergarten, pending eligibility confirmation.

Qualifying factors include:

- Individualized Education Program (IEP)
- McKinney Vento Eligible (Homelessness)
- Dual Language Learner
- Foster/Kinship care



Workforce Resources

- Professional Development Information System ([PDIS](#))
- Early Learning Development Guidelines ([ELDGs](#))
- Early Childhood Mental Health [Support Line](#)
- Consultative Roles [Overview](#)
- [Pathways to Success: Colorado's Comprehensive Early Childhood Workforce Plan](#)
- [Early Childhood Workforce Development Subcommittee](#)





Family Resources

- [Supporting Children with Special Health Conditions](#)
 - [Supporting Children with Special Health Conditions - Digital Version \(English\)](#)
 - [Supporting Children with Special Health Conditions - Digital Version \(Spanish\)](#)
 - [Supporting Children with Special Health Conditions - Print Version \(English\)](#)
 - [Supporting Children with Special Health Conditions - Print Version \(Spanish\)](#)
- The PLAYbook contains information and activities that anyone caring for young children can use to prepare children to be successful when entering kindergarten. The PLAYbook is available in [English](#), [Spanish](#), [Arabic](#), [Karen \(Burmese\)](#), and [Somali](#).



Elevating Early Childhood

- Colorado Birth Through Five 2023 [Needs Assessment](#)
- [Statewide Early Childhood Strategic Plan](#) and [At A Glance](#)



Stay Connected and Learn More

[Colorado Department of Early Childhood Website](#)

[CDEC Newsletter](#)

[Head Start Center Locator](#)

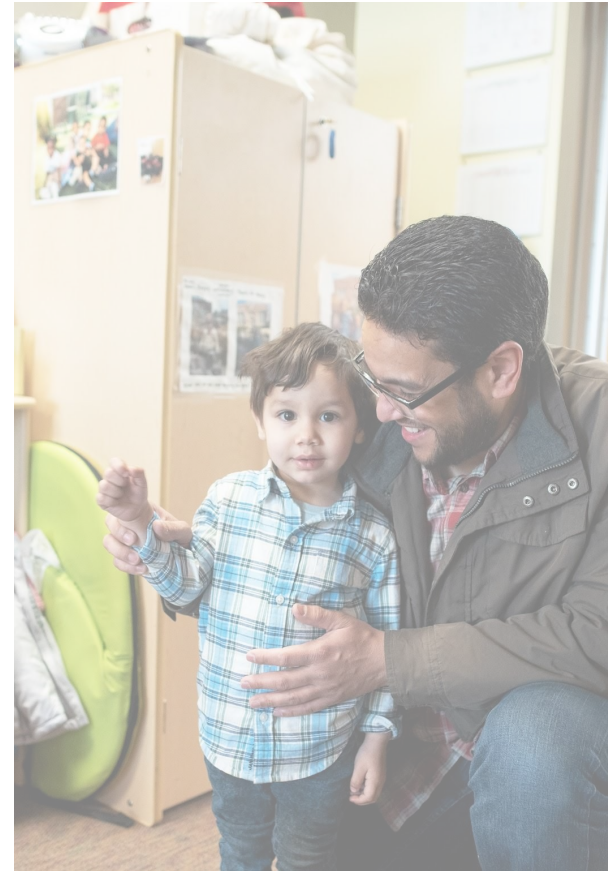
[Early Intervention Colorado | Ei home](#)

[Find My Local Coordinating Organization](#)

[Universal Preschool Colorado FAQs](#)

[Early Childhood Leadership Commission](#)

[CO Marketplace](#)



A woman with long brown hair is smiling and holding two young children on a beach. The child on the left is a toddler with curly hair, and the child on the right is a young boy. They are all wearing white polo shirts. The background shows palm trees and a sandy beach under a clear sky.

THANK YOU

Questions?

heather.craiglow@state.co.us

rachel.karas@state.co.us



COLORADO
Department of Early Childhood

Day 2: Evaluation



Day 3: Evaluation

